

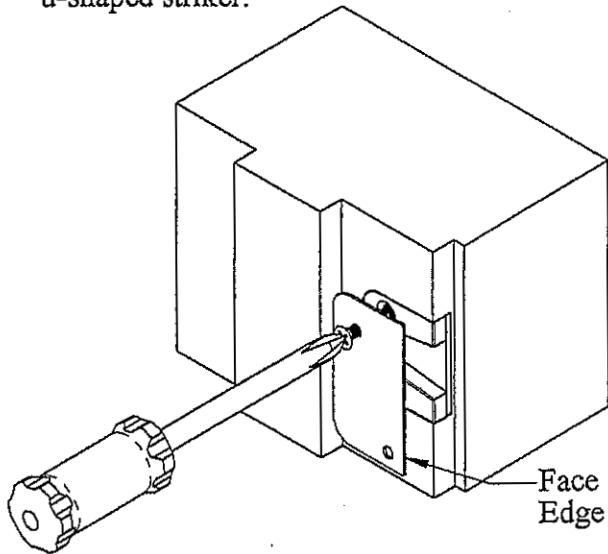
Installation of HLS Multipoint System Auto Release Strike (When Replacing Old Automatic Gear)

①

Remove top screw from existing u-shaped strike and attach new underplate directly on top of the existing u-shaped strike with the screw you removed. Line up face edge of new underplate with the edge of jamb (see below).

Mark an outline of the underplate on the frame.

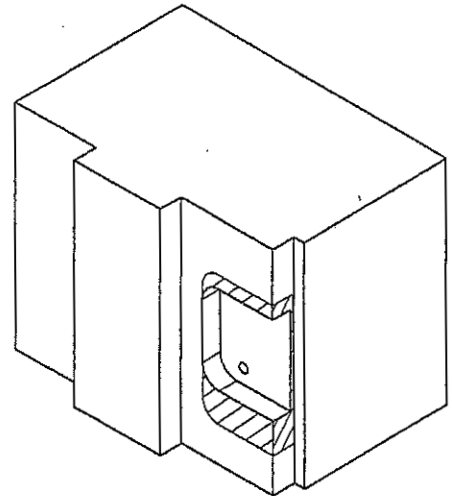
Remove the screw to remove underplate, remove second screw from existing strike and take out old u-shaped striker.



②

Route inside the outline you made (shown below as the shaded area) to remove the excess frame material.

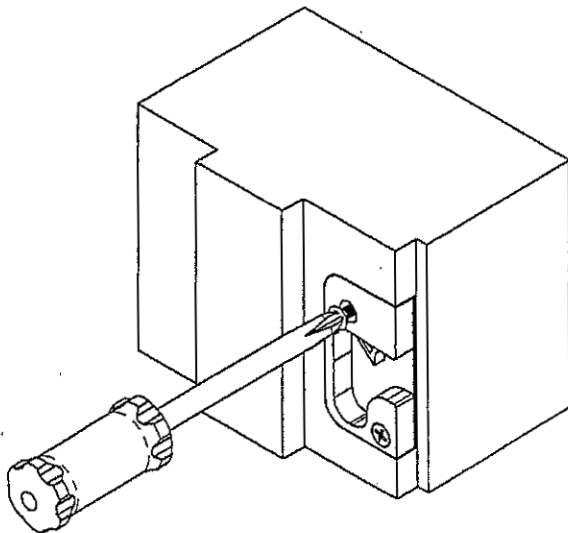
Note: Increase the depth to 9.5mm [3/8"]



③

Insert the new underplate and then the new auto release striker into frame and tighten screws.

Install the new multipoint gear system as per instructions.



④

Adjust the auto release pin. Loosen screw using a 3mm allen wrench to adjust the position of the auto release pin, then tighten to fix position.

